

Hi4 System Software Version Up Procedure

March, 2002

1. SwapFTL install

- ① Your system OS must either WINDOWS 95 or WINDOWS 98.
- ② Create a directory to copy win95v200.EXE in that directory.
- ③ Double click win95v200.EXE.
- ④ Execute Extracted Setup.EXE.

note) Refer to the following message, copy form "<http://www.scmmicro.com/security/swapftl.html>"

Installing SwapFTL For Win-95

1. Obtain the win95.exe file from SCM Microsystems by emailing support-usa@scmmicro.com.
2. Run the file by double clicking on it in the Windows Explorer. The files will extract to the same directory containing the win95.exe file.
3. Run the setup program by double clicking on the file called setup that was just extracted from step 2.

Note: The above software "win95" is evaluation software for supporting some of the SRAM's and Flash cards only. Please use it at your own risk.

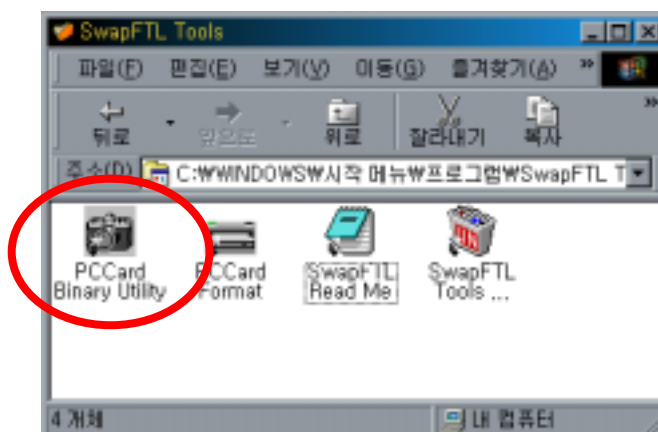
SwapFTL for WIN-95 is a 32-bit flash driver support made by Microsystems for Windows 95. It supports 95% of flash cards (Most Intel series I, II, II+, C series, some D series, AMD's, SCM's, and M-systems) as well as some SRAM cards (Fujitsu, HP, Epson, AIMS, and generic).

You will not see any drive letters assigned under "My computer" until you insert a storage device PC card.

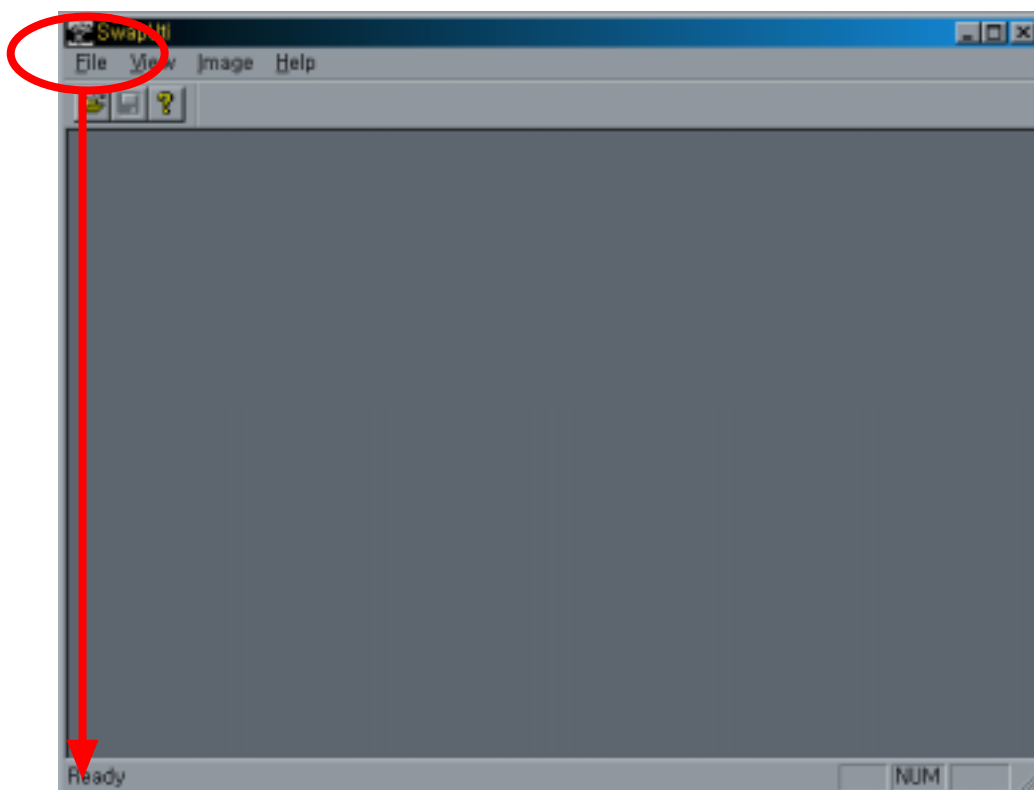
The resources assigned for the inserted PC card will be found under the "Hard Disk Controller" section in the Device Manager in System properties.

2. In order to write the robot software on PC-card

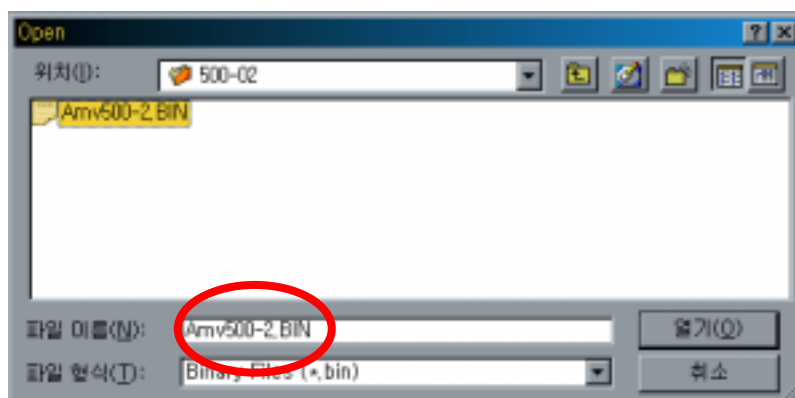
- ① Insert PC-card to notebook.
In some case, driver is automatically installed from operating system.
- ② Execute "PCCard Binary Utility" which is installed in the above.

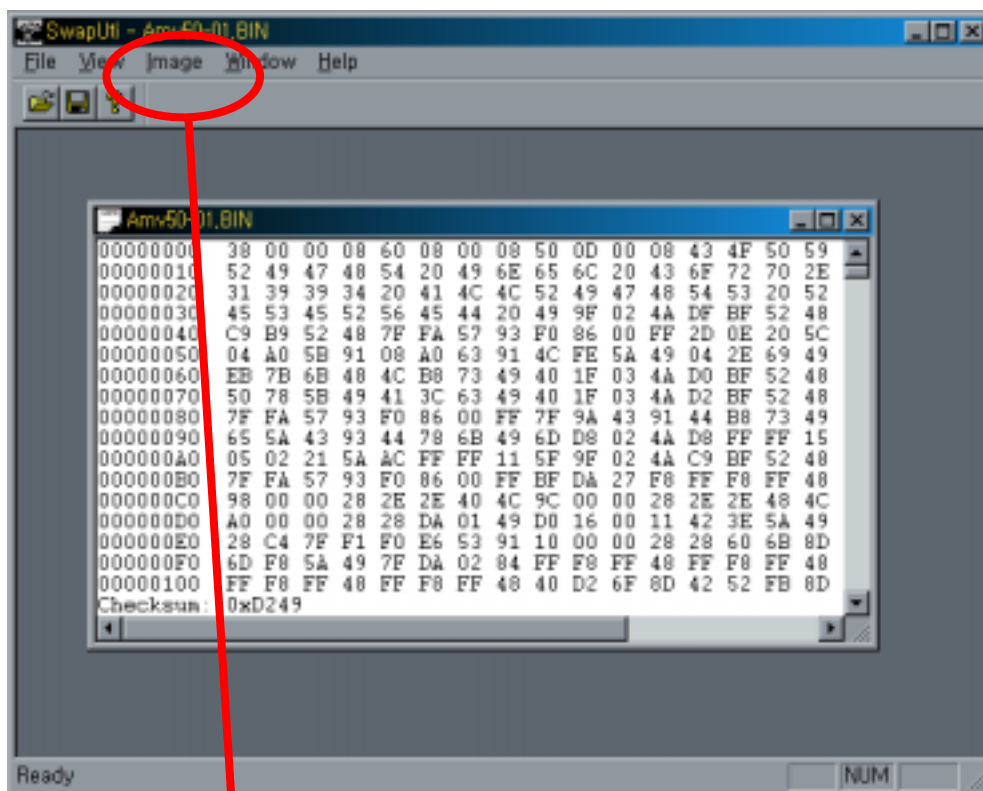


③ Following window is opened.

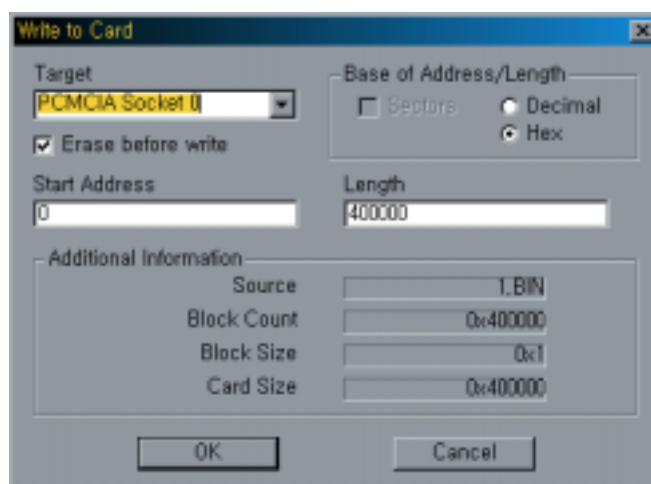


④ Click File→Open and select data file.(cf, In case of *.ZIP, extract Zip file)

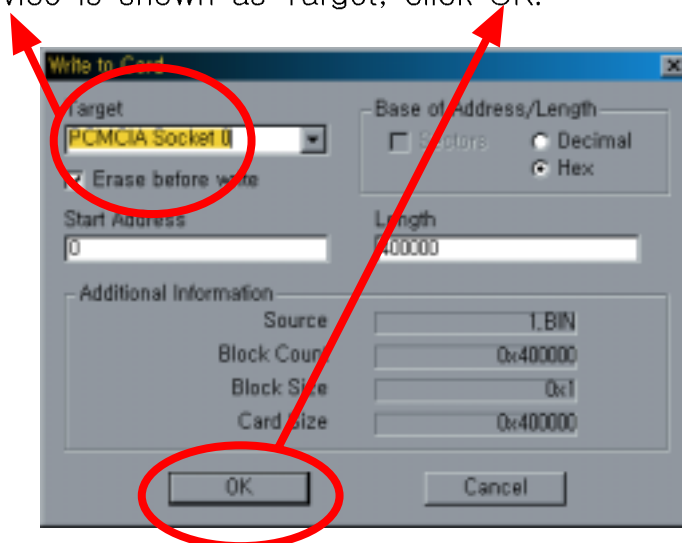




⑤ Click Image → Write.

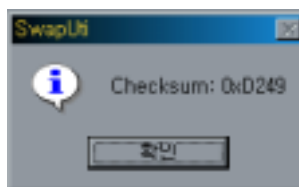


⑥ PCMCIA device is shown as Target, click OK.



cf) If PCMCIA device is not shown, SwapFTL is not properly installed.

⑦ After completion of Write, following window is appeared.



⑧ Click OK, and all completed. remove PC-card

[Precaution] If a kind of PC-card is SRAM-card, you must set lock of the write protect by the key in SRAM-card side.

